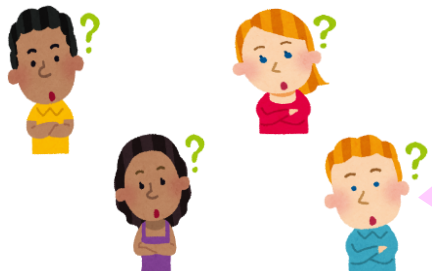


**Yokohama District Immigration Services Office**  
**Foreign Residents Advisory Room**

# Y-FORA

The Yokohama District Immigration Services Office staff have started an advisory service for foreign residents.



I was suddenly dismissed from my company, but I would like to continue to work in Japan. What should I do?

We will listen to your concerns and provide advice and support in cooperation with relevant organizations in order to solve your problems.



Kaiokun  
(Yokohama District Immigration Services Office mascot character)

## Location

Yokohama District Immigration Services Office, Yokohama Port Office  
1F Yokohama Shinko Joint Government Building  
1-6-1 Shinko, Naka-ku, Yokohama City  
(5 minutes walk from Bashamichi Station on the Yokohama Minatomirai Line)

**Map is on the reverse side**

## Hours of operation

**Monday~Friday 9:00~17:00**

※Except 12:00~13:00

※Except national holidays,  
year-end and new year holidays

## How to make an appointment

**※Advance appointment required**

Appointments can be made by phone or via the Internet.

☎ 0 4 5 - 6 8 0 - 1 6 2 0



URL: <https://forms.gle/dbNUPx9cxyGykT5Z8>

[Advance appointment is required in order for us to hear about your inquiry and give you appropriate advice]

**When making an appointment, please tell us your name (can be anonymous), desired date and time, whether you need an interpreter, your contact information, and the content of your inquiry.**

**The more information you give us, the more appropriate advice we can give you.**

※We will respond in cooperation with the Human Rights Protection Division of the Yokohama District Legal Affairs Bureau, Houterasu Kanagawa, Kanagawa Labor Bureau, JETRO Yokohama, Kanagawa Prefecture, and Yokohama City. →For details, see reverse side.

# Yokohama Minato Mirai district and surrounding areas initiatives to support foreign residents

In the area surrounding the Yokohama Minato Mirai district, organizations that support foreign residents will work together to provide consultation services for foreign residents, support for companies that wish to hire foreign residents, and disseminate information.

## Related Organizations

- ① Yokohama District Immigration Services Office, Yokohama Port Office  
Place: Yokohama Shinko Joint Government Building 1F Phone: 045-680-1620
- ② Yokohama District Legal Affairs Bureau, Human Rights Protection Division  
Place: Yokohama Second Joint Government Building 5F Phone: 0570-090911(navigation dial)
- ③ Japan Legal Support Center (Houterasu) KANAGAWA District Office  
Place: Industry & Trade Center Building 10F Phone: 0570-078377(navigation dial)
- ④ Consultation Service for Foreign Workers  
Place: Yokohama Second Joint Government Building 8F Phone: 045-211-7351
- ⑤ Hello Work Yokohama (Kanagawa Labor Bureau)  
Place: Yokohama Shinko Joint Government Building 2F Phone: 045-663-8609(44#)
- ⑥ Hello Work Yokohama for New Graduates(Kanagawa Labor Bureau)  
Place: Yokohama ST Building 16F Phone: 045-312-9206
- ⑦ Japan External Trade Organization (JETRO) Yokohama  
Place: Industry & Trade Center Building 2F Phone: 045-222-3901
- ⑧ Multilingual Support Center Kanagawa (Kanagawa Prefecture)  
Place: Kanagawa Kenmin Center 13F Phone: 045-316-2770
- ⑨ YOKOHAMA Foreign Residents Information Center (YOKE・City of Yokohama)  
Place: Pacifico Yokohama, Yokohama International Organizations Center 5F  
Phone: 045-222-1209

## Map of related organizations

